

Enchanting ,Venus' table decorations



Use your favourite pictures to create your very own impressive deco items. From classic masterpiece to family photo – you can transform them all into unique objects using laser copies and the FIMO image transfer technique.

Whether lanterns, coasters, place mats or keyrings ... the possibilities are endless.



You can find our products in well-stocked sales outlets. Should you have any queries, please call our hotline: +49 (0)911 9365-888. **Have fun crafting!**

FIMO Shopping / material list



Enchanting ,Venus' table decorations

Space for your notes

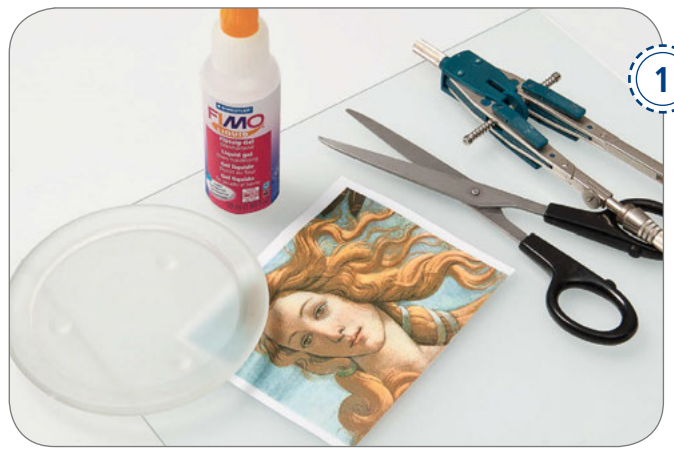
You will need these STAEDTLER articles:

Product	Colour	Art. no.	Quantity	✓
FIMO liquid, 50ml	--	8050-00 BK	1	
FIMO effect	Metallic gold	8020-11	1	
FIMO soft	White	8020-0	2	
Push mould	Ornaments	8725 08	1	
Metallic-powder	Gold	8709 BK	1	
Acrylic roller or clay machine	--	8700 05	1	
	--	8713	1	
Modelling tools	--	8711	1	
Blades	--	8700 04	1	
Oven thermometer	--	8700 02	1	

Tools: Smooth work surface (glass or ceramic), brush, scissors, compass, pencil
Material: Glass coaster, glass lantern - square-shaped



Instructions: Coaster with the Venus motif



1 Make a laser copy of the chosen motif. Measure the diameter of the recess and use a compass to transfer the outline to the photocopy. Then cut the picture out around the lines.



2 Add some FIMO liquid to the recess and spread it out with a brush. Afterwards, add the cut-out picture and press on evenly.



3 Pour more FIMO liquid into the coaster recess.



4 Spread the FIMO liquid evenly all over until the motif is fully covered. The layer should be approx. 1 mm thick. Now place the coaster in the oven and harden for **20 minutes at 130°C**.

Tip: Use the brush to spread the FIMO liquid beyond the edge of the motif, right up to the edge of the glass. The picture is then fully embedded, making it impossible for liquid to get to the paper.

Cleaning: Clean dirty brushes and clothing with acetone or orange peel oil.

Storage: Store FIMO liquid at room temperature and avoid contact with PVC or polystyrene.

Instructions: Lantern with the Venus motif



Make a laser copy of the chosen motifs. Use the brush to apply a thin coat of FIMO liquid all over the surface of 2 motifs. Harden in the oven for **20 minutes at 130°C**.



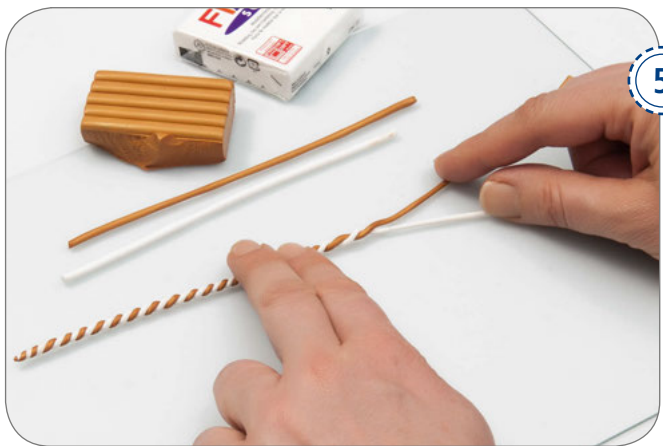
After hardening, place the motifs in lukewarm water and rub the layer of paper off approx. 5 minutes later. Before you continue, dry with a hairdryer or by dabbing with a cloth.



Once cool, draw a circle around the motifs by tracing around a tea-light.



Brush a little gold metallic powder into the 'Ornaments' push mould, press gold FIMO effect into the recess and cut off any surplus material. Then carefully demould the motifs.



Use half a strip of gold FIMO to make an approx. 1 mm thick length of string and repeat the procedure with half a strip of white. Twist the two lengths of string together to create a cord.

Instructions: Lantern with the Venus motif



Roll two blocks of white FIMO soft out to an approx. 15 x 15 cm sheet (around 2-3 mm thick) using either the clay machine (setting 1) or the acrylic roller.

Cut off any surplus material.



Place the leaf metal together with the carrier sheet onto the FIMO. Slowly remove the carrier sheet, dabbing the leaf metal on carefully with a wide brush as you do so.

Tip:
The leaf metal is very light so you need to avoid draughts.
Do not touch with your hands as it will otherwise stick to your fingertips.



Roll the sheet of FIMO complete with the leaf metal through the clay machine again on setting 5 or roll it out with the acrylic roller until it is about half the original thickness.

This causes the leaf metal to tear thereby creating a nice crackle effect.

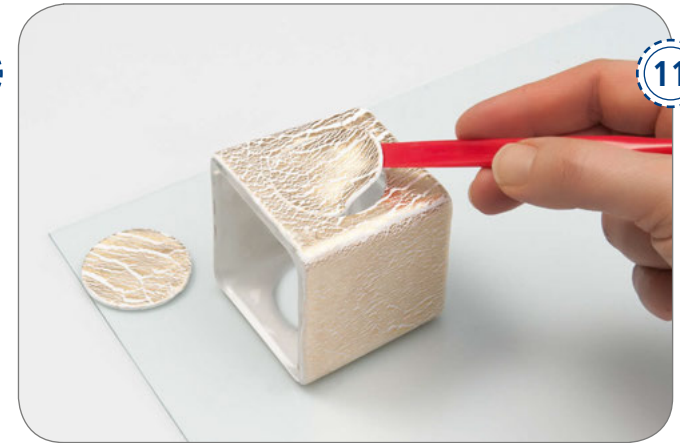
Instructions: Lantern with the Venus motif



9 Lay the lantern on the sheet of FIMO and cut off a strip the same width as the lantern. Cover all sides with FIMO.



10 Use a tea-light holder to cut out a circle on two opposite sides of the lantern.



11 Remove the FIMO circle and carefully smooth around the edges with your fingers.



12 Brush a thin layer of FIMO liquid over the window, place the motif on top and press on to remove any air bubbles. Do the same on the other side.



13 Position the FIMO cord around the medallion and add the ornaments. Press on gently. Do the same on the other side.



14 Then harden the lantern in the oven for **30 minutes at 110°C**.





Pattern sheet

